

A large, dark brown mammoth with long, curved tusks stands in a grassy field. The background shows rolling hills and a cloudy sky. The text is overlaid on the lower half of the image.

Elephant Mountain, Alaska

Intrusive Related Gold Project

June 2025

100% Ownership

Corporate Disclosure

The company is an exploration stage mineral resource exploration company and none of its mineral projects have yet to be proven to be economic. The contents of this presentation is for information purposes only and does not constitute an offer to sell or a solicitation to purchase any securities referred to herein.

Forward-looking Statements

This presentation contains “forward-looking information” within the meaning of applicable Canadian securities regulations. All statements other than statements of historical fact herein, including, without limitation, statements regarding the company’s plans, goals or objectives and future exploration, development, potential mineralization, exploration results and future plans are forward-looking statements that involve various risks and uncertainties. There can be no assurance that such statements will prove to be accurate, and actual results and future events could differ materially from those anticipated in such statements. Readers are advised not to place an undue reliance on forward-looking statements.

Why Alaska? Well Endowed with Gold

40% of U.S. Gold Resources – About 200 million ounces

A Long Mining History – Attractive Tax Regime

A safe stable jurisdiction for mineral exploration and mining

Native Land Claims resolved in 1971

Central Alaska Gold Districts have Excellent access with Paved Highways and Historic State Trails to the Gold Camps

Alaska ranks high in the Fraser Institute's Investment Attractive Index

Tintina Gold Province - Alaska & Yukon

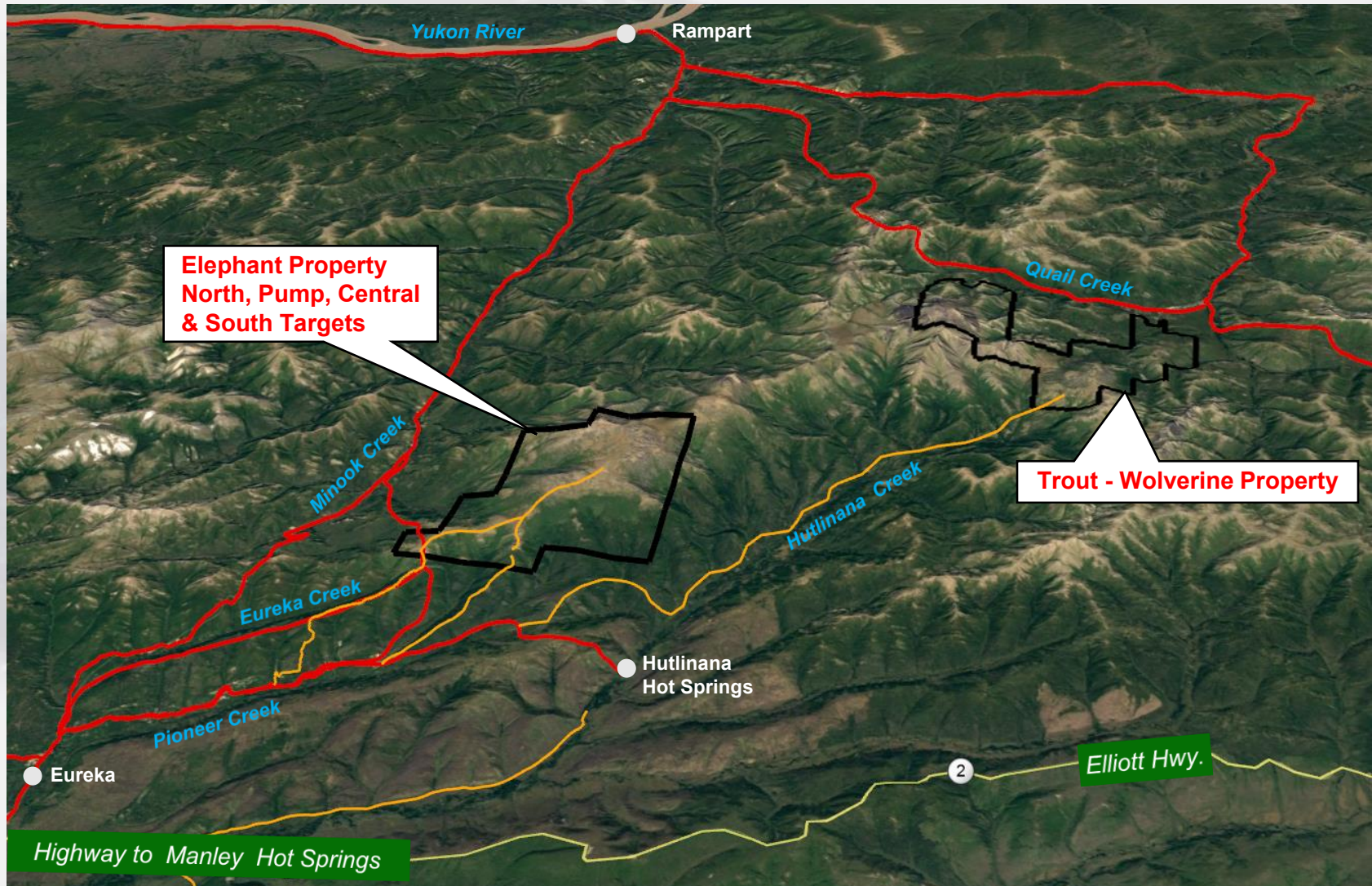


Map source: USGS Fact Sheet 2007-3061

ELEPHANT MOUNTAIN PROJECT, Alaska

- 100% owned and Option to Earn 100%
- Road and State trail accessible in Central Alaska. – Permitted for Drilling
- State Mining Claims
- Target Similarity to Snowline, Fort Knox, Golden Summit, Eagle Mine (Yukon)
- Six intrusive hosted gold target areas within a 12 x 5 km district **All zones are open to expansion through geochemical exploration**
- Soil sampling & drilling to date indicates a large 2 x 2 km gold mineralizing system straddling a wide intrusive-hosted fault zone with **4 targets**, 2 targets with wide low-grade gold and narrower high grade gold.
- **South Zone Discovery step-out drilling a high priority.**
- **North Zone, Pump Zone & Central Zone** chargeability targets warrant grid-drilling to discover higher grade feeder structures.
- **Trout target a high priority for drilling.**
- South Fork target warrants drilling

Elephant Mountain Gold Project





Elephant Mountain Gold Project

Eureka – Manley Hot Springs District, Alaska

SIX DRILL TARGETS

#1 SOUTH ZONE TARGET – ELEPHANT PROPERTY

Drill Discovery - **4.09 gpt gold over 4.6 metres - 1400 m strike potential to expand.**

#2, #3, #4 - NORTH ZONE PUMP ZONE AND CENTRAL ZONE TARGETS – ELEPHANT PROPERTY

Drilling – **Intersects 0.40 gpt over 147.1 m and 0.514 gpt gold over 99.4 m.**

“Porphyry gold” target - **2.25 km² area of chargeability** - associated with gold-in-soil and rocks.

#5 - TROUT TARGET – TROUT-WOLVERINE PROPERTY

1,000 by 300 m gold-in-soil anomaly (>100 ppb gold, up to 2,330 ppb gold).

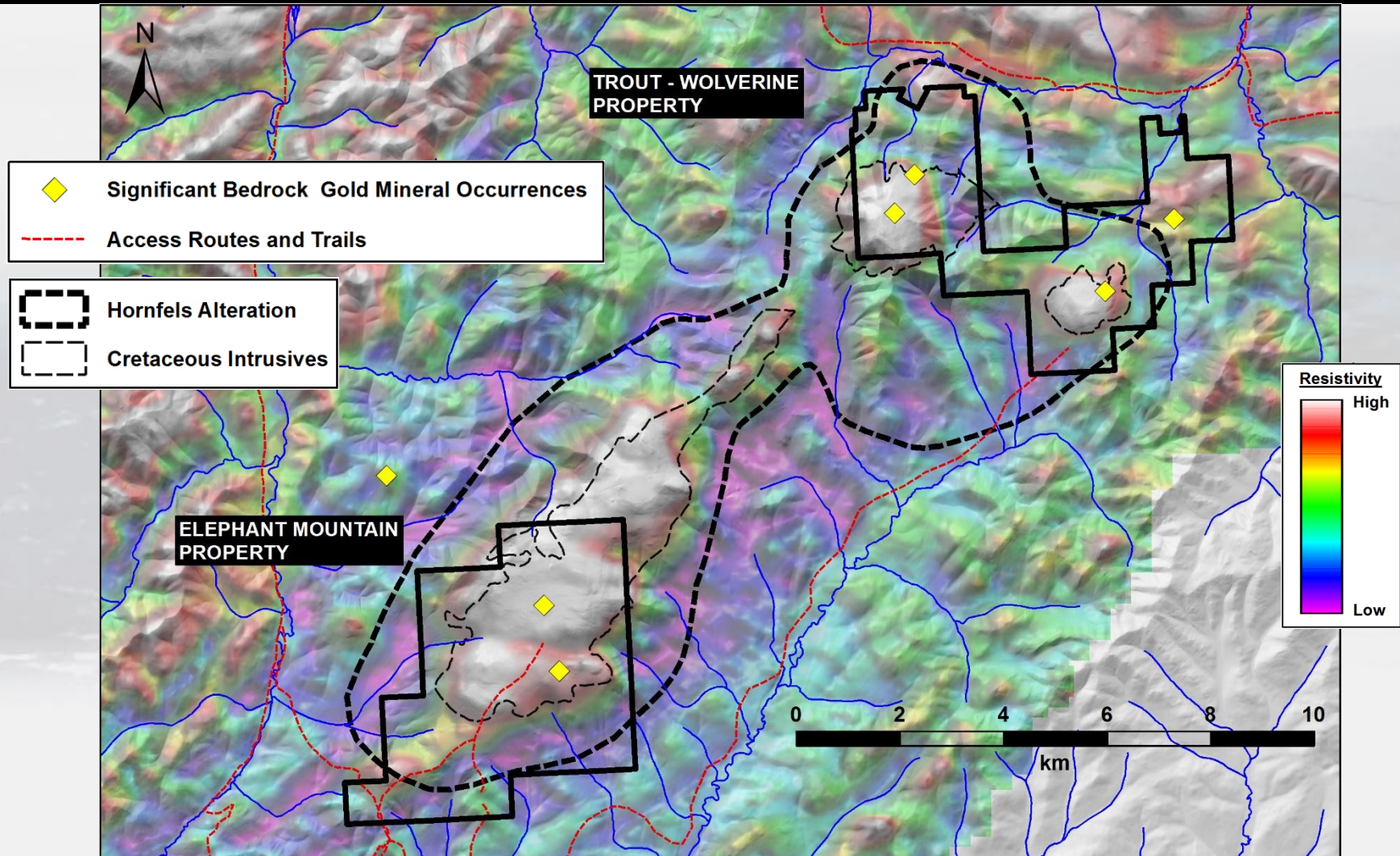
Encouraging rock samples with up to **23.0 gpt gold**

#6 - SOUTH FORK TARGET – TROUT-WOLVERINE PROPERTY

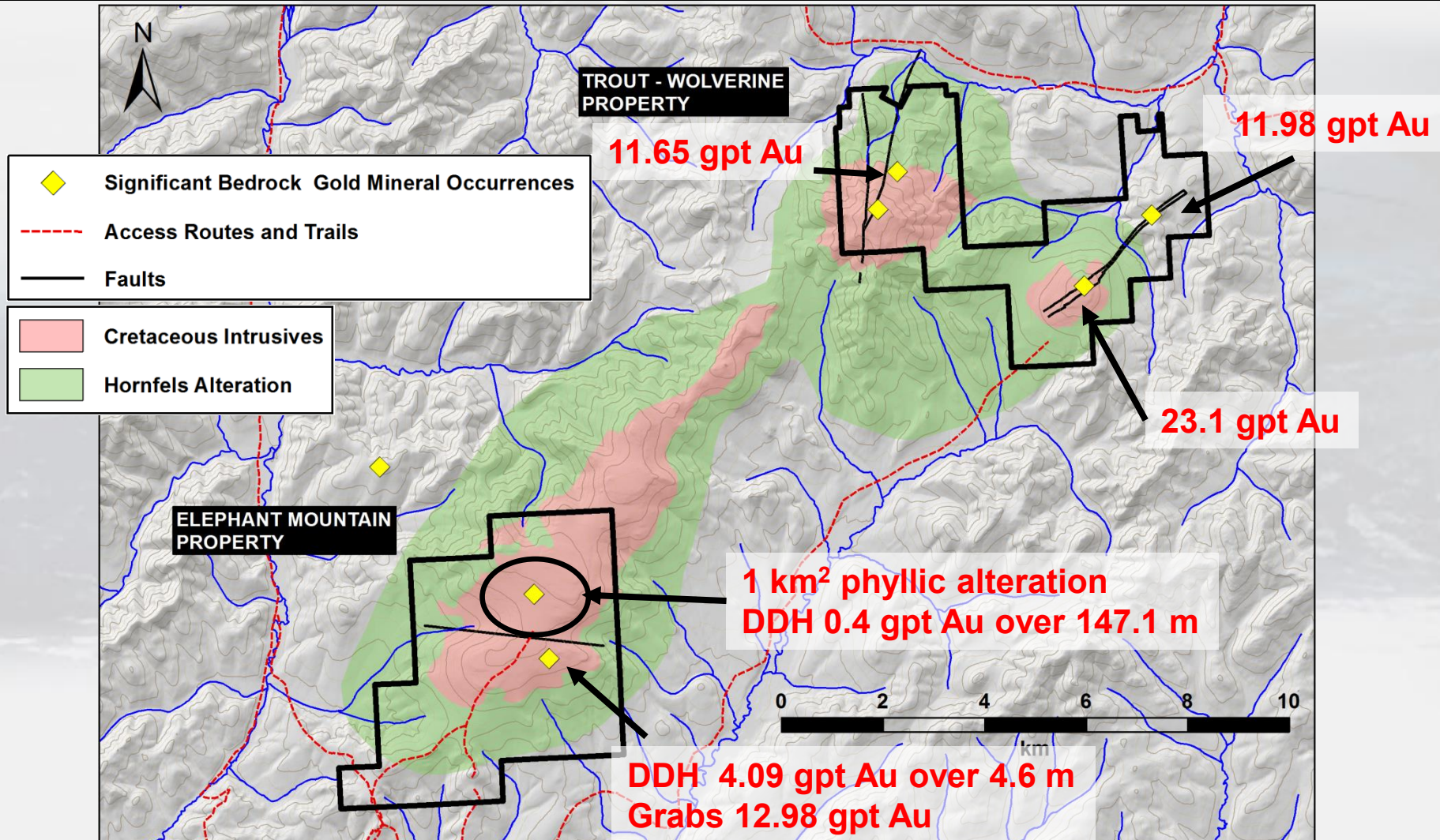
Encouraging “grab” samples include **6.6, 6.73, 10.35 & 11.98 gpt gold** in 250 m long zone.

Single trench through zone includes **0.547 gpt gold over 9.14 m** in the shear

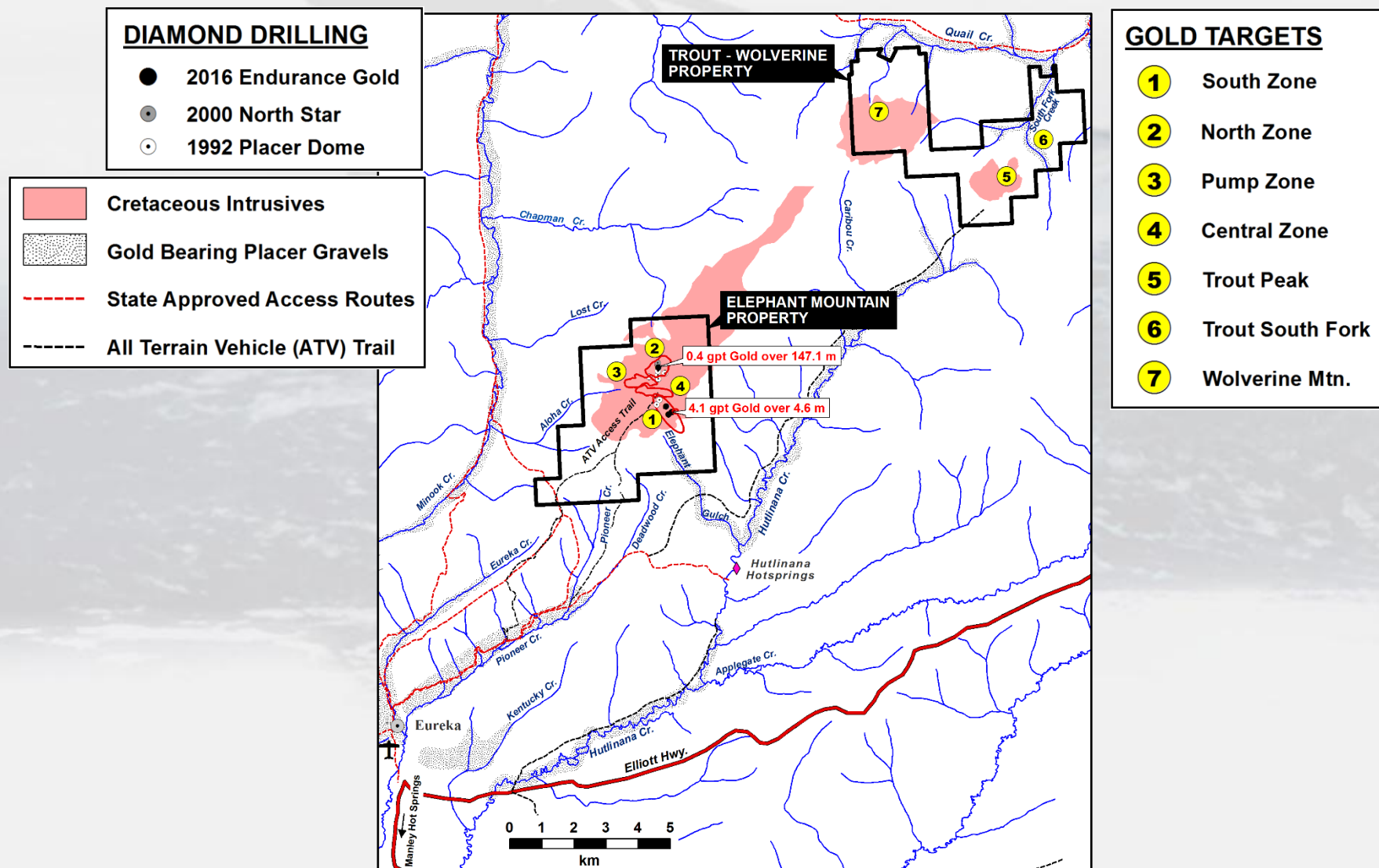
Elephant Mountain Gold Project – Airborne Resistivity



Elephant Mountain Gold Project – Area Geology

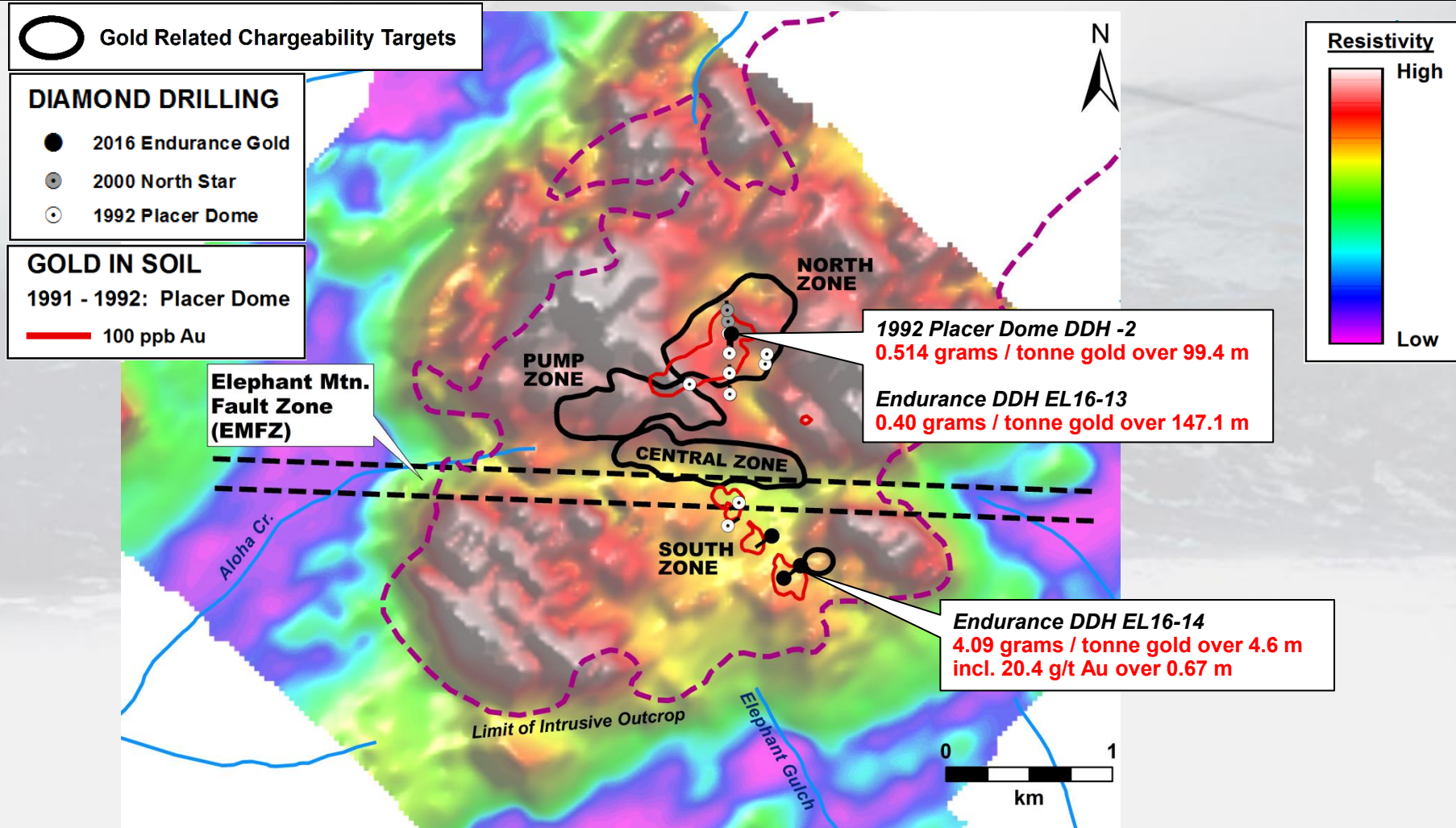


Elephant Mountain Gold Project



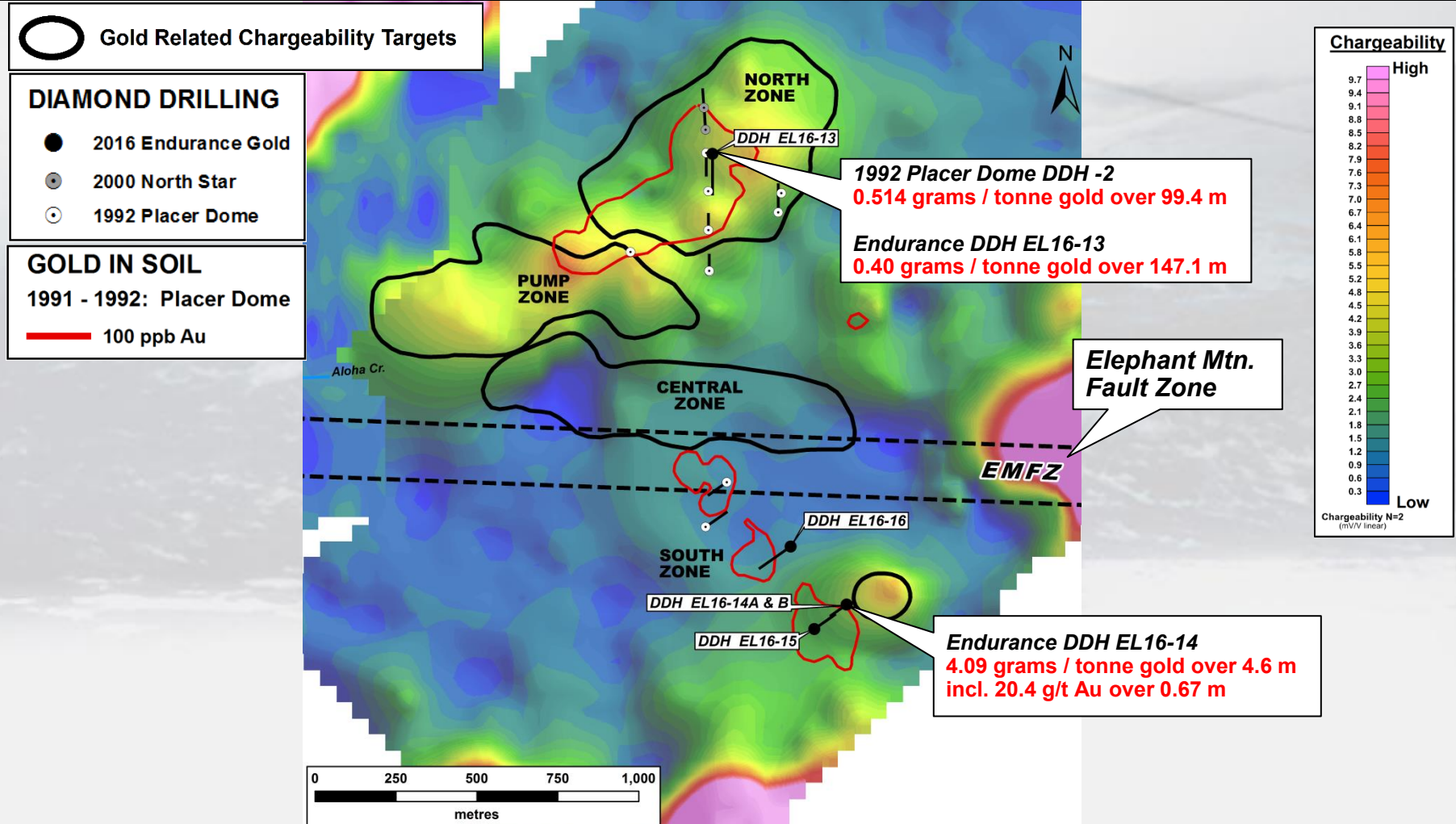
Elephant Mountain Gold Project

Airborne Geophysics – 7200 Hz. Resistivity



Elephant Mountain Gold Project

Chargeability (50m dipole) – N2





Elephant Mountain Gold Project

Eureka – Manley Hot Springs District, Alaska

ELEPHANT PROPERTY – FOUR DRILL TARGETS

1,830 by 460 m gold-arsenic soil anomaly at the North, South, Pump and Central Zones.
Grab samples include ***12.98 gpt, 5.21 gpt, 4.4 gpt & 3.02 gpt gold.***

SOUTH ZONE TARGET

Power Auger Soil Sampling – ***Defines 1,400 x 250 m gold-arsenic-antimony soil anomaly with values exceeding 100 ppb gold.***

Resistivity Anomaly is coincident with Soil anomaly.

Drill Discovery - ***4.09 gpt gold over 4.6 metres associated with the resistivity anomaly.***

Untested Chargeability Target next to drill discovery - potential to expand the discovery.

NORTH ZONE TARGET

Drilling – ***Intersects 0.40 gpt over 147.1 m*** and 1992 DDH with ***0.514 gpt gold over 99.4 m.***

1200 x 600 m IP chargeability anomaly with DDH and soil confirms large untested Au trend.

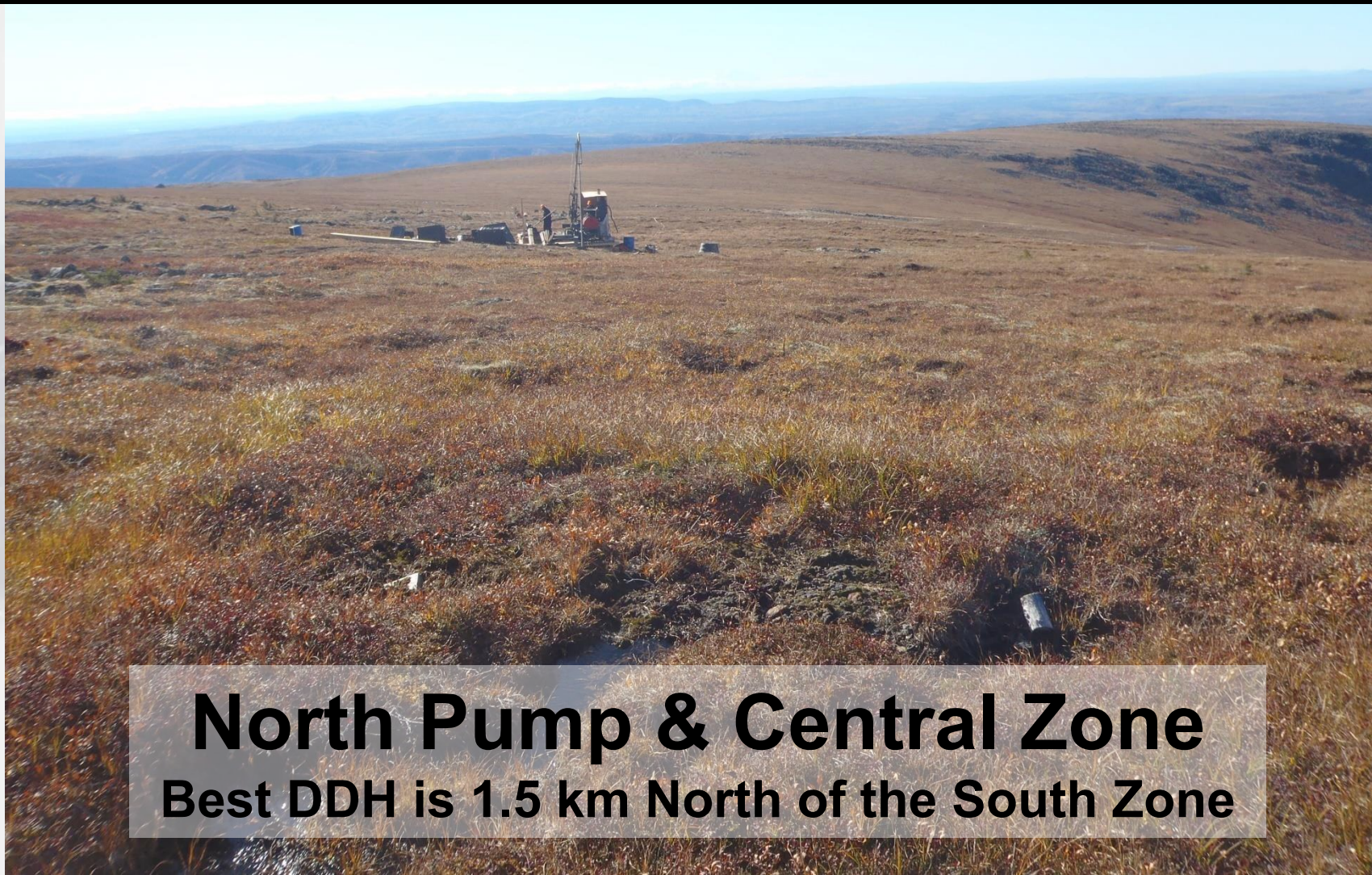
PUMP ZONE TARGET

IP chargeability anomaly identified in covered area – covered area entirely untested.

CENTRAL ZONE TARGET (ELEPHANT MOUNTAIN FAULT ZONE - EMFZ)

Resistivity with deep untested chargeability anomaly – possible deep oxidation of gold zone.

Elephant Mountain Gold Project Drilling by Endurance Gold



North Pump & Central Zone
Best DDH is 1.5 km North of the South Zone

Elephant Mountain Gold Project

Induced Polarization Anomalies

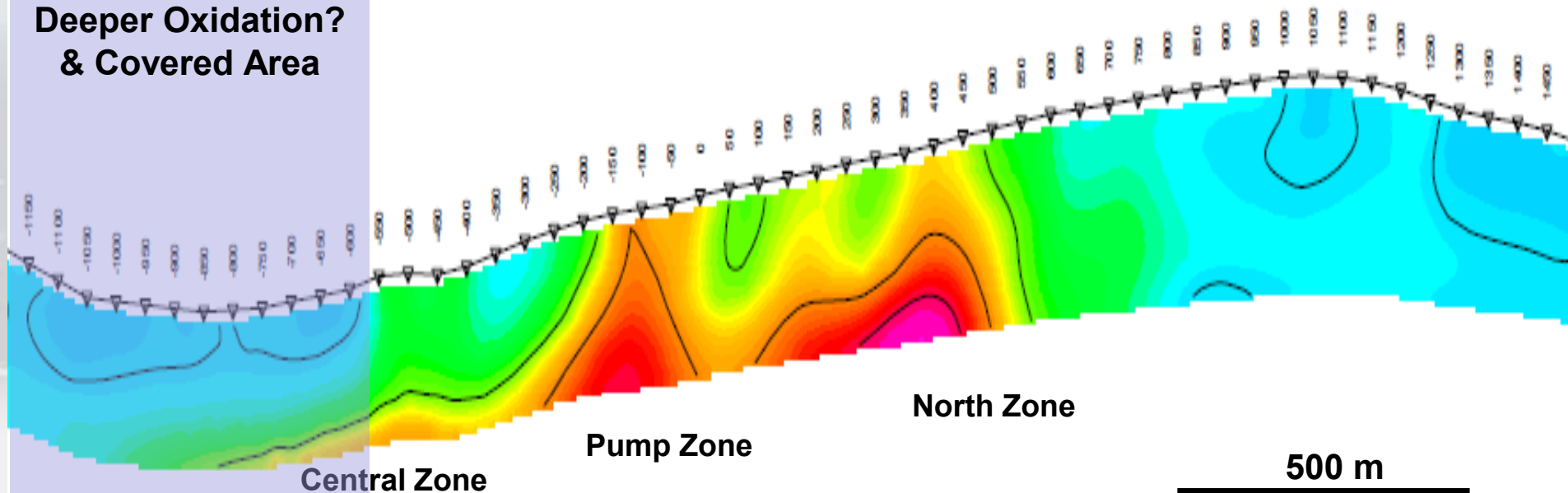
SW

Looking West Northwest

NE

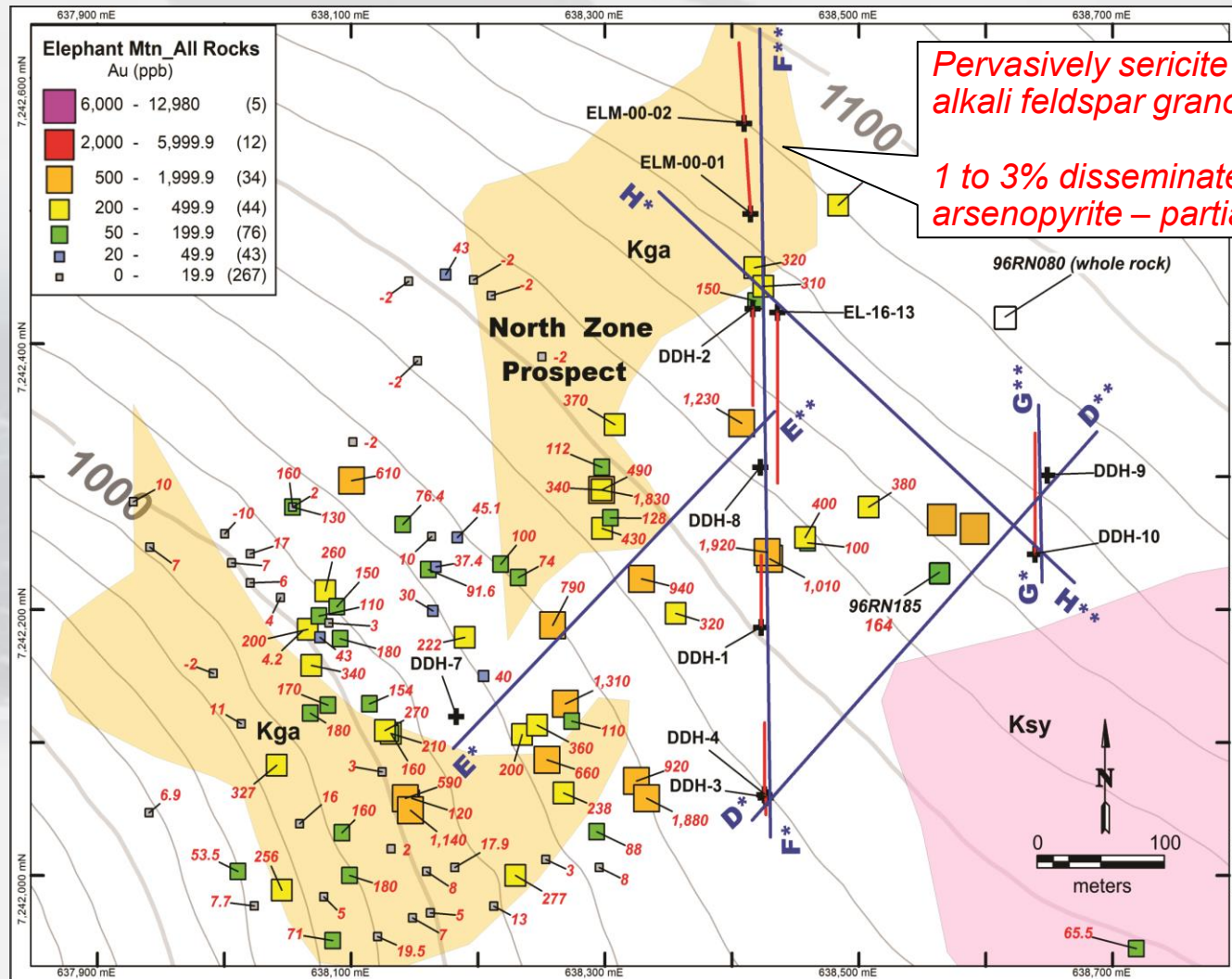
EMFZ
Deeper Oxidation?
& Covered Area

Modelled Chargeability (mV/V)



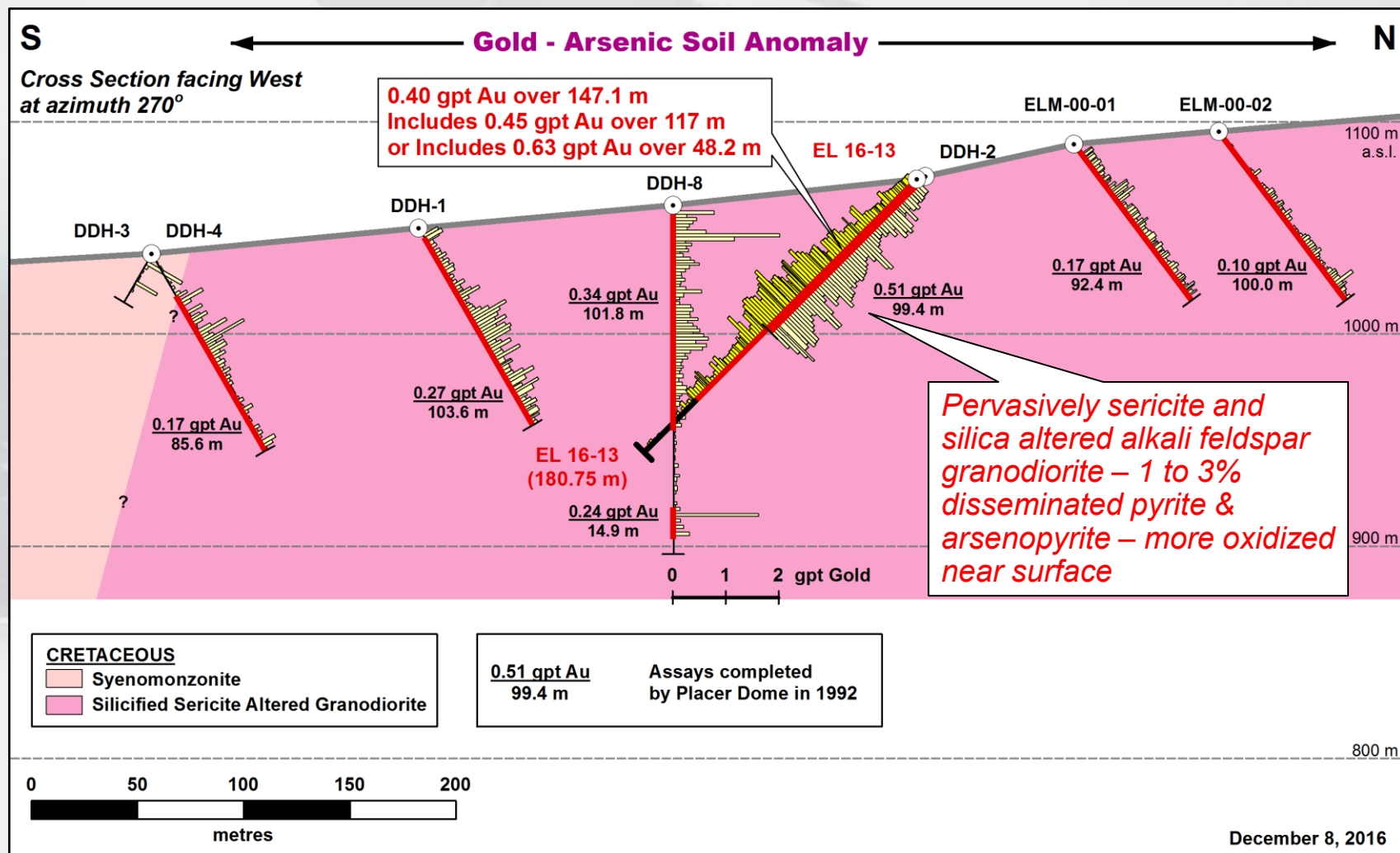
Elephant Mountain Gold Project

North Zone – Geology and Rock Sample Results



Elephant Mountain Gold Project

North Zone - Drill Cross Section Hole EL 2016-13



Elephant Mountain Gold Project North Zone Drilling EL 16-13 - Altered Granodiorite

**Intense phyllic (sericite)
+/- clay alteration with
disseminated pyrite-
arsenopyrite replacing
mafic minerals in
granodiorite**

**0.4 gpt over 147.1 metres
*Includes 0.63 gpt over 48.2 m***

**Example
From 197.3 feet to 215.8 feet**

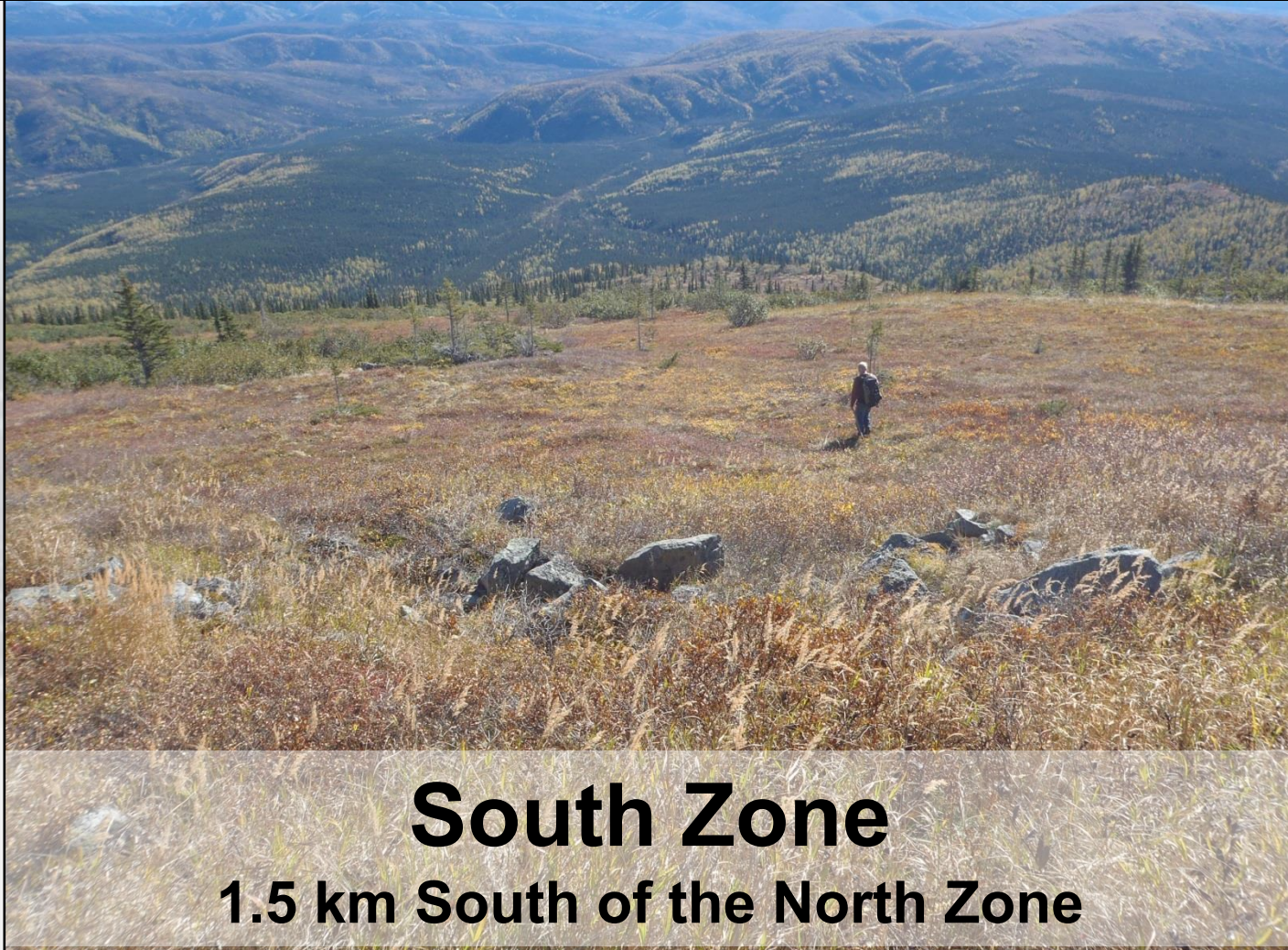


Elephant Mountain Gold Project North Zone Drilling EL 16-13 - Altered Granodiorite



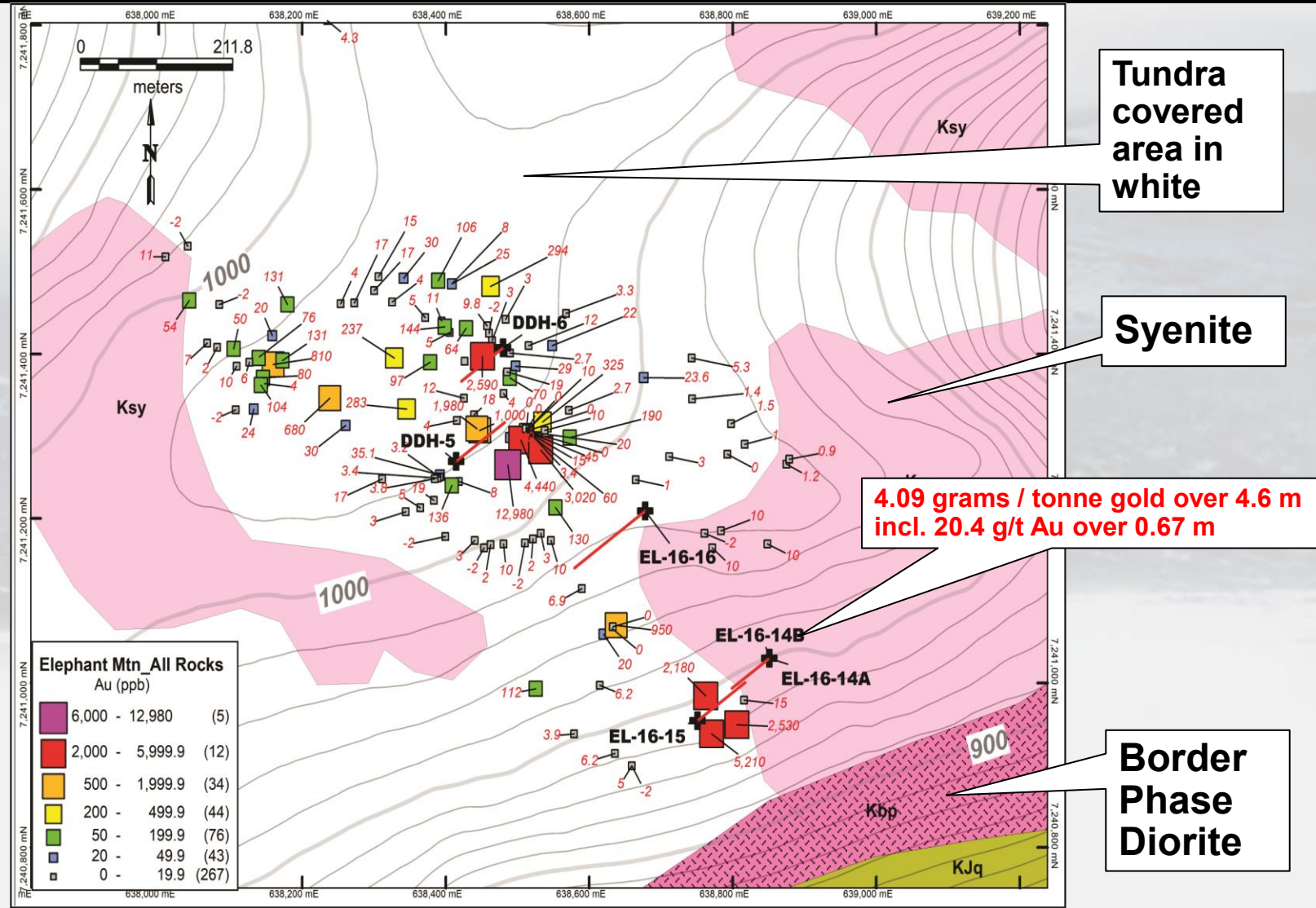
VEINLET EXAMPLE AT 243' – 0.683 GPT AU/1.13M

Elephant Mountain Gold Project



Elephant Mountain Gold Project

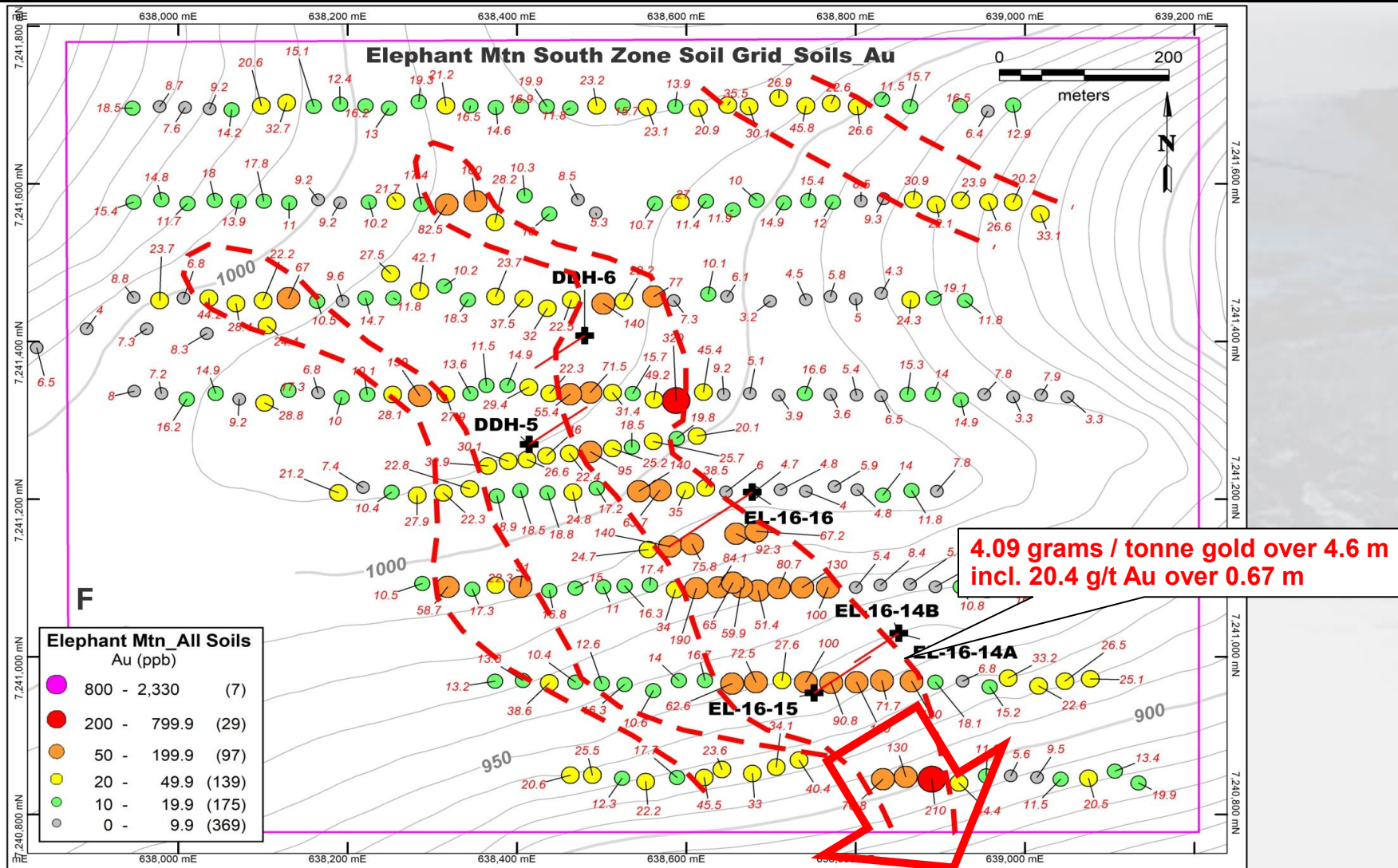
South Zone – Geology and Rock Sample Results





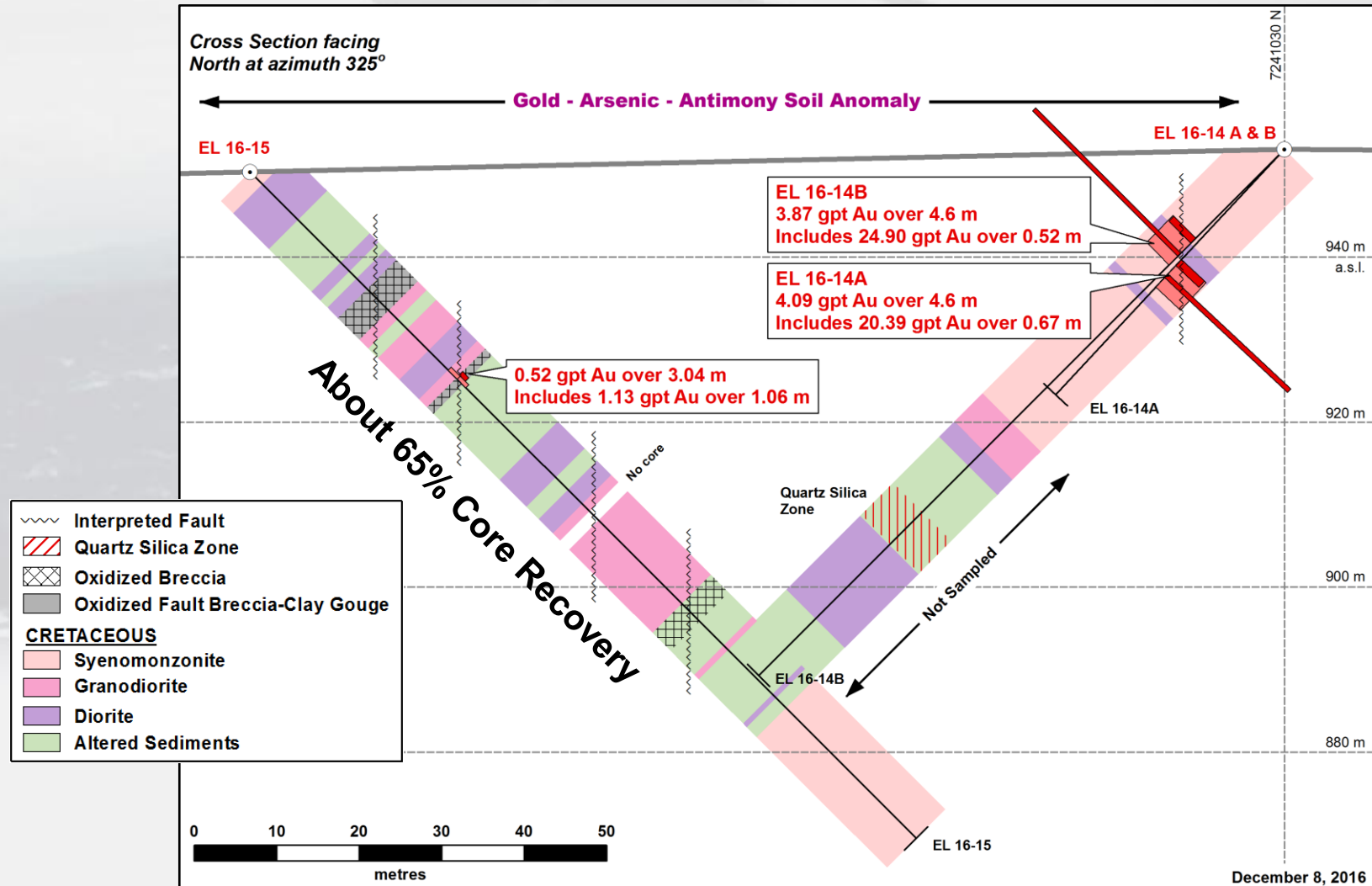
Elephant Mountain Gold Project

South Zone Soil Anomaly Gold



Elephant Mountain Gold Project

South Zone - Drill Cross Section Holes EL 16-14 & 15



Elephant Mountain Gold Project

DDH EL 16-14A

3.82 g/t over 3.3 feet

0.33 g/t over 4.5 feet

20.4 g/t over 2.2 feet

0.48 g/t over 5.0 feet

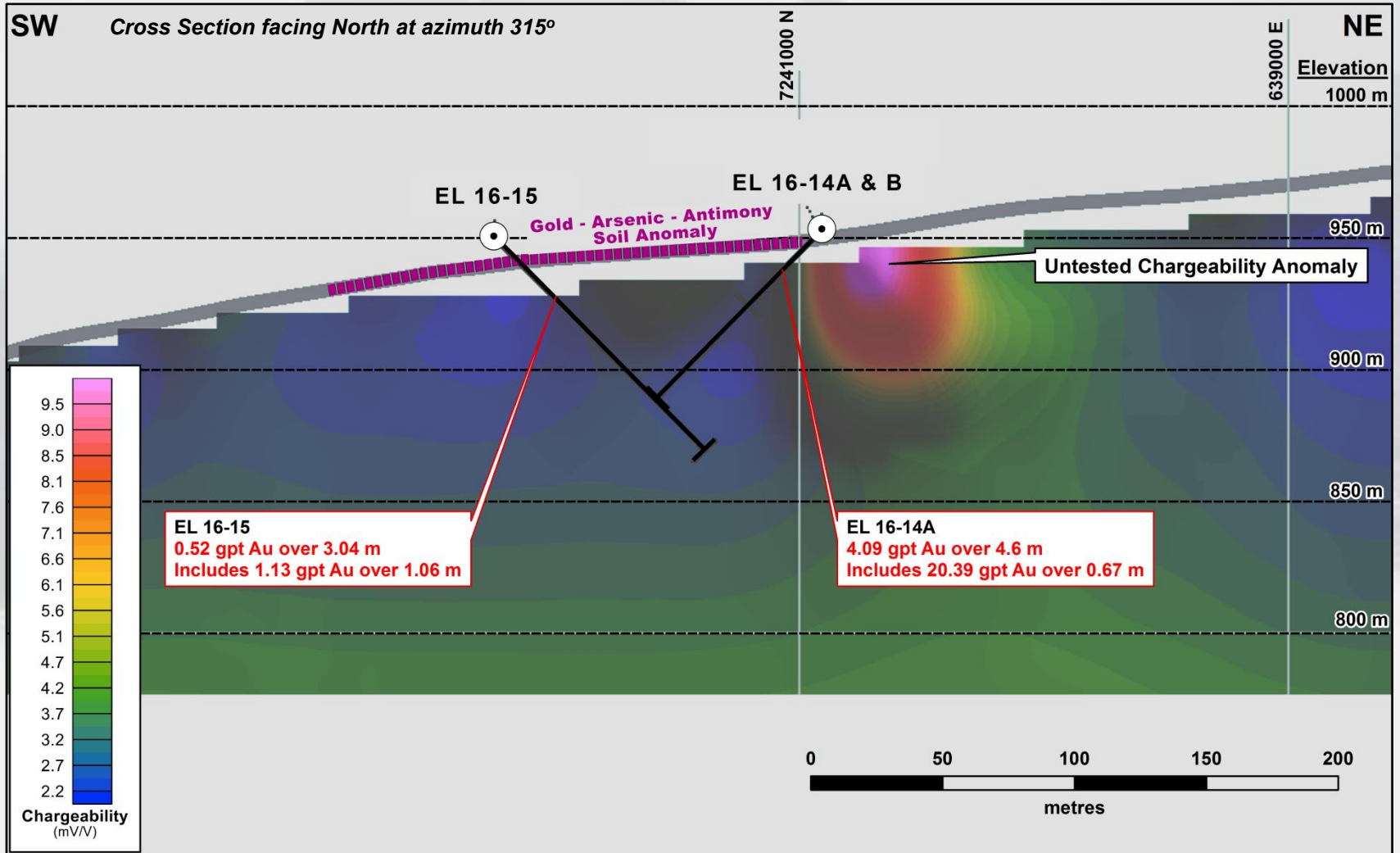
Average intersection
From 60 to 75 feet
4.09 g/t Au over 15 ft



Elephant Mountain Gold Project

South Zone Cross - Section

IP Chargeability – 2D

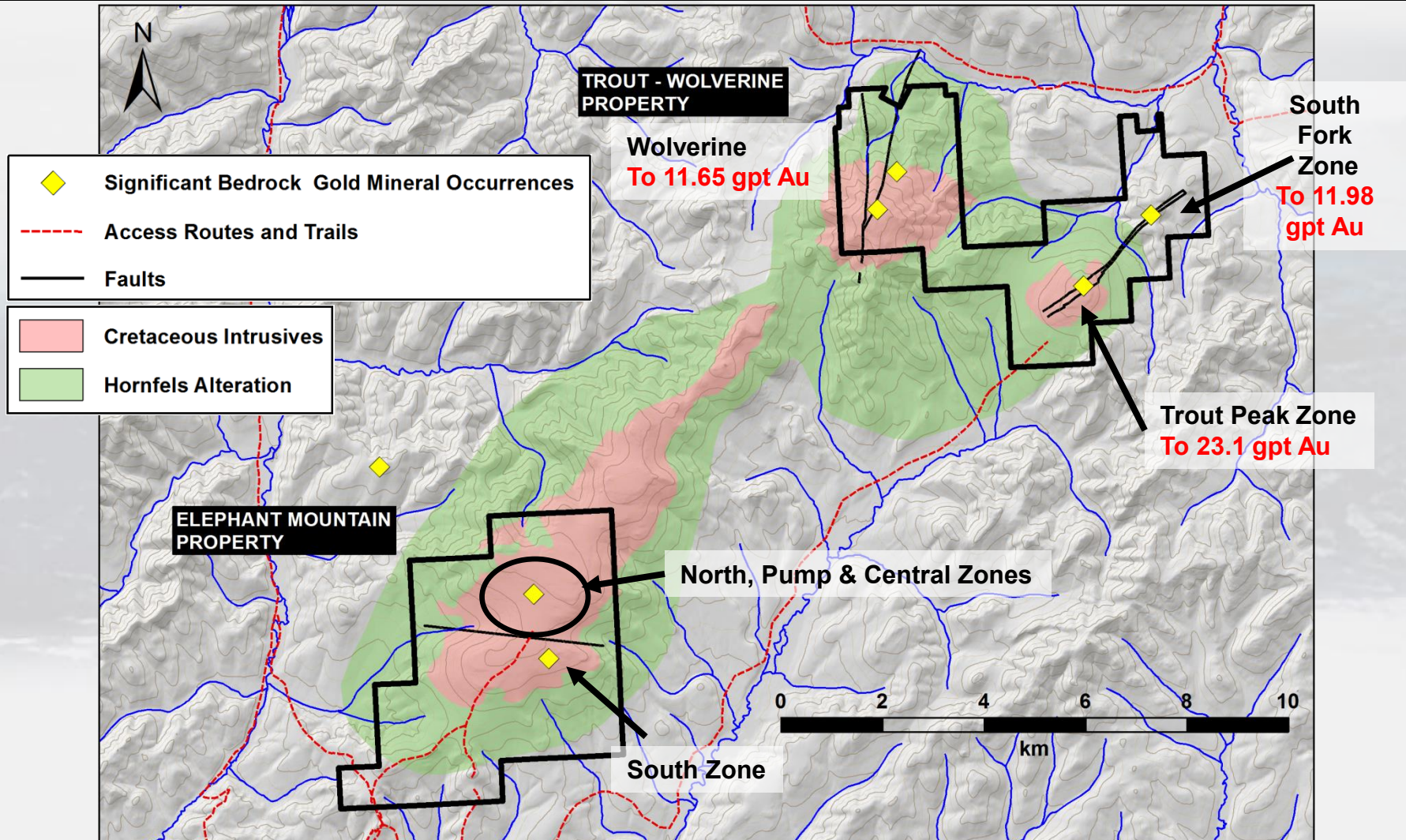


Elephant Mountain Gold Project Trout – South Fork - Wolverine Targets



**Trout-Wolverine Property Looking South to the
Elephant Mtn. Property**

Elephant Mountain Gold Project – Area Geology





Elephant Mountain Gold Project

Eureka – Manley Hot Springs District, Alaska

TROUT-WOLVERINE PROPERTY – ADDITIONAL DRILL TARGETS

Trout Target – PRIORITY FOR TRENCHING & DRILL TARGET

1,000 by 300 m gold-in-soil anomaly (>100 ppb gold, up to 2,330 ppb gold).

Encouraging rock samples with up to **23.0 gpt gold** - hosted in Cretaceous-age syenite.

A 15 to 20 m wide by 130 m “open” soil anomaly (**>400 ppb gold-in-soil**) with peak values of **2,330 and 2,100 ppb gold-in-soil**. Trench values of **0.51 gpt gold over 12.2 m**. Higher grade soil anomaly and trench results are hosted **within the larger 1,000 x 300 m gold-in-soil (>100 ppb)** coincident with the Trout Fault zone in intrusive.

South Fork Target – (south tributary of Quail Creek) – DRILL TARGET

Encouraging “grab” samples include **6.6, 6.73, 10.35 & 11.98 gpt gold** in 250 m long zone.

Hosted in sheared hornfels altered clastic sediments. Best gold-in-rock values related to oxidized quartz stockwork and quartz-healed breccia.

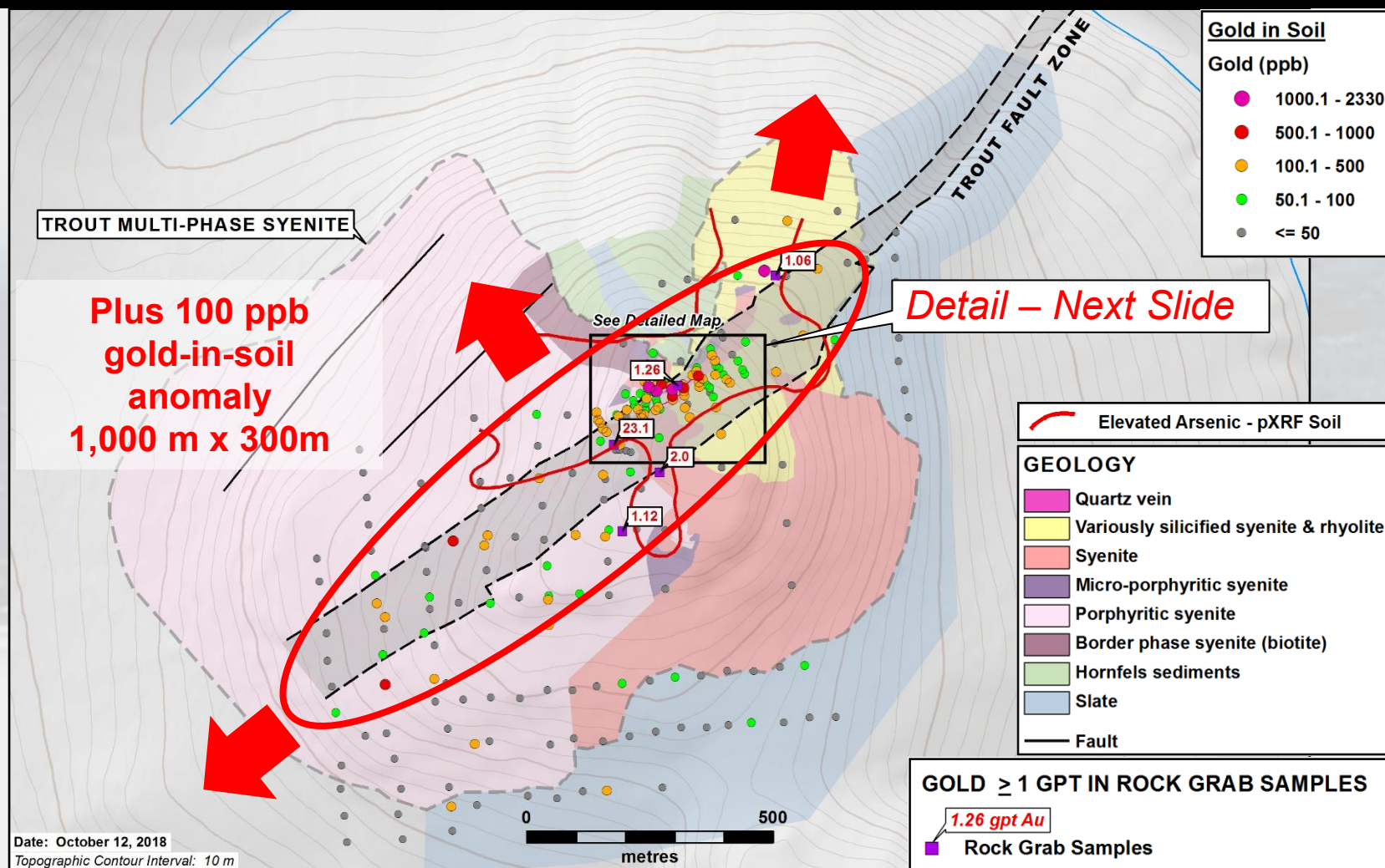
Single trench through zone includes **0.547 gpt gold over 9.14 m** in the shear.

Wolverine Target

300 by 300 m gold-in-soil anomaly (>50 ppb gold, up to 465 ppb gold). The soil anomaly is associated with **visible gold** in veinlet stockwork in felsic intrusive – Up to **11.65 gpt gold**.

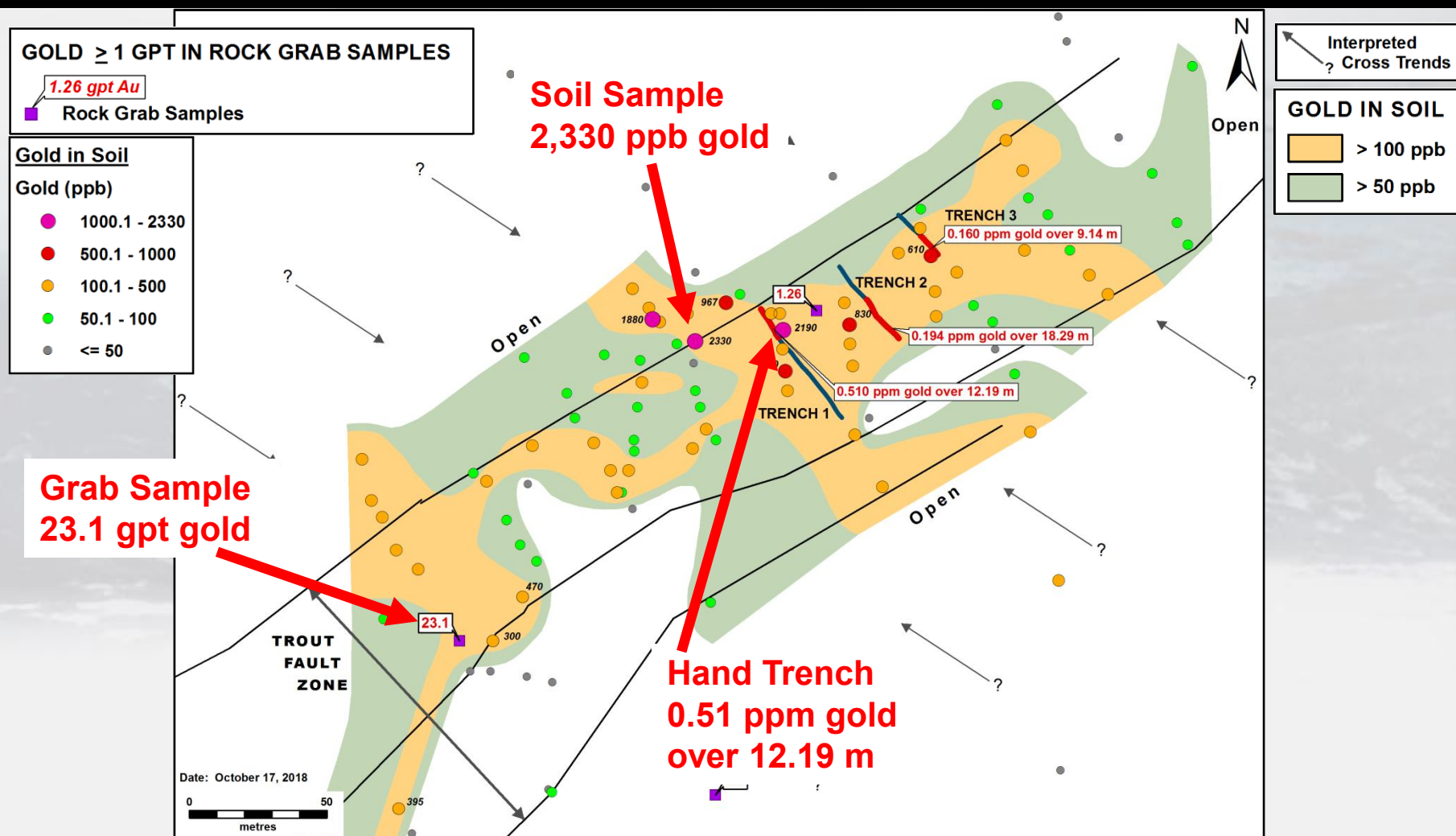
Elephant Mountain Gold Project

Trout Peak Target – Geology & Gold-in-Rock & Soil



Elephant Mountain Gold Project

Trout Target – Trench Area – Contoured Gold-in-Soil





Elephant Mountain Gold Project

Eureka – Manley Hot Springs District, Alaska

1. Elephant Property – 100% owned

2. Trout - Wolverine Property – Option to own 100%

Remaining obligation include US\$30,000 cash by Dec 2025

Both Properties subject to 1% NSR after buyout

Elephant Mountain Gold Project

Highlights & Plans



- Six intrusive hosted gold target areas within a 12 x 5 km district
All zones are open to expansion through geochemical exploration

Elephant Property

- Drilling to date indicates a large 2 x 2 km gold mineralizing system straddling a wide intrusive-hosted fault zone with **4 targets**, 2 targets with wide low-grade gold and narrower high grade gold.
- **South Zone Discovery step-outs a high priority for drilling.**
- **North Zone, Pump Zone & Central Zone** chargeability targets warrant grid-drilling to discover higher grade feeder structures.

Trout –Wolverine Property

- **Trout target a high priority for drilling.**
- South Fork target warrants drilling.



www.endurancgold.com

Robert T. Boyd, P.Geo. is a qualified person as defined in National Instrument 43-101 and supervised the compilation of the information forming the basis for this summary. The Placer Dome activity during the period between 1989 and 1992 preceded the implementation of NI 43-101.

Bedrock grab samples are selective by nature and are unlikely to represent average grades within the bedrock when drilled.

All 2012 through 2024 rock and soil samples were analyzed at ALS Minerals using Au-ST43, Au-OG43, and ME-MS41.

**Suite 1212 – 666 Burrard Street
Vancouver, BC V6E 2X8 Canada
Telephone: 604-682-2707
Toll Free: 877-624-2237**

EDG: TSX.V | ENDGF: OTCQB | Frankfurt: 3EG